



GAT MONTHLY MEMBERSHIP PROGRESS REPORT

Results as of: 5/31/2024

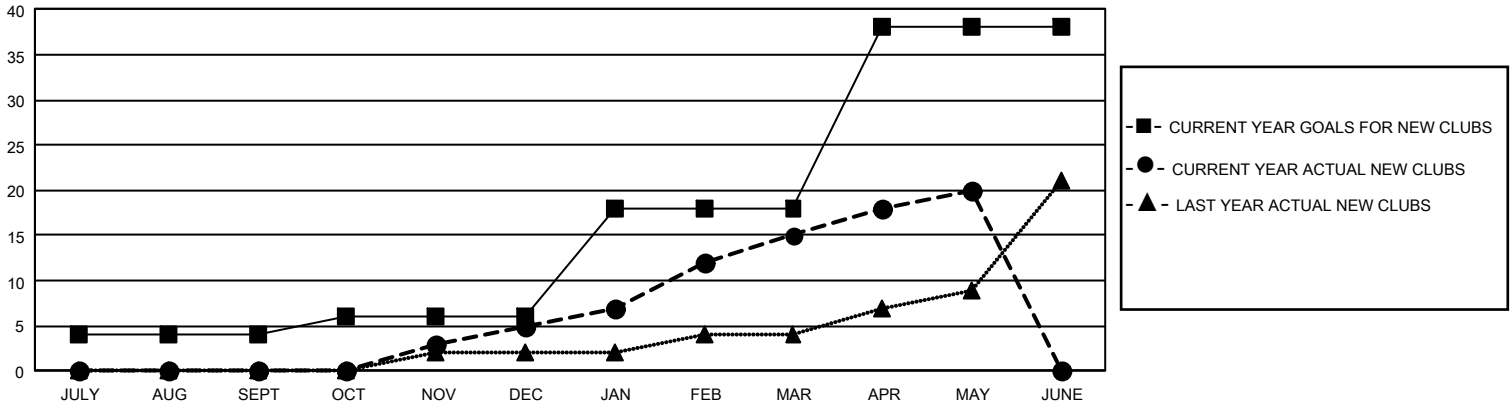
GMT Constitutional Area 4, Group H

REPORT DOES NOT INCLUDE CLUBS IN UNDISTRICTED AREAS.

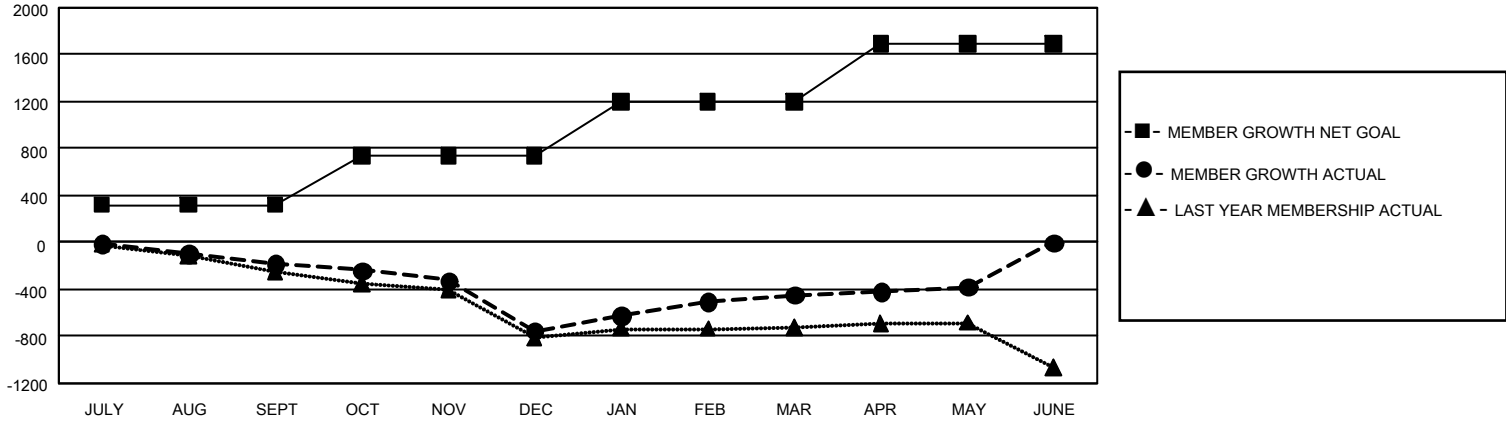
| Clubs | | | |
|-----------------------|---------------|-----------|---------------|
| RESULTS FOR 2023-2024 | | | |
| QUARTER | NEW CLUB GOAL | NEW CLUBS | DROPPED CLUBS |
| JULY/AUG/SEPT | 12 | 0 | 11 |
| OCT/NOV/DEC | 6 | 5 | 7 |
| JAN/FEB/MAR | 36 | 10 | 6 |
| APR/MAY/JUNE | 60 | 5 | 2 |

| Members | | | |
|-----------------------|------------------------|----------------------|--|
| RESULTS FOR 2023-2024 | | | |
| QUARTER | MEMBER GROWTH NET GOAL | MEMBER GROWTH ACTUAL | DROPPED MEMBERS ACTUAL (including transfers) |
| JULY/AUG/SEPT | 319 | 476 | 567 |
| OCT/NOV/DEC | 421 | 684 | 1,134 |
| JAN/FEB/MAR | 460 | 1,022 | 604 |
| APR/MAY/JUNE | 495 | 555 | 441 |

GOALS AND ACTUAL NEW CLUBS CUMULATIVE



GOALS AND ACTUAL MEMBERS CUMULATIVE



| | | | |
|------------------------|---|---------------------------------|-----------------|
| DROPPED CLUBS: 26 | 839 CLUBS OF 1,481 ADDED 1 OR MORE NEW MEMBERS | <u>GENDER DISTRIBUTION</u> | |
| <u>DROPPED MEMBERS</u> | | MALE | 22,677 (74.18%) |
| DECEASED | 335 | FEMALE | 7,891 (25.81%) |
| CLUB CANCELLED | 118 | NON BINARY | 1 (0.00%) |
| OTHER | 2,289 | PREFER NOT TO ANSWER | 2 (0.01%) |
| TOTAL | 2,742 | TOTAL FAMILY UNIT MEMBERS | 1,252 |
| | CLICK HERE FOR CUMULATIVE MEMBERSHIP DATA | FAMILY MEMBERS PAYING HALF DUES | 630 |